



RAHANDUSMINISTEERIUM

# Search for **FINANCIAL LITERACY** on a state level

## **Budget reforms** in Estonia and **usage of AI**

Sven Kirsipuu

Deputy Secretary General on Fiscal Policy

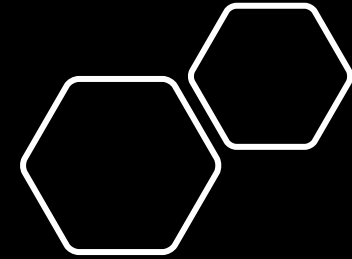
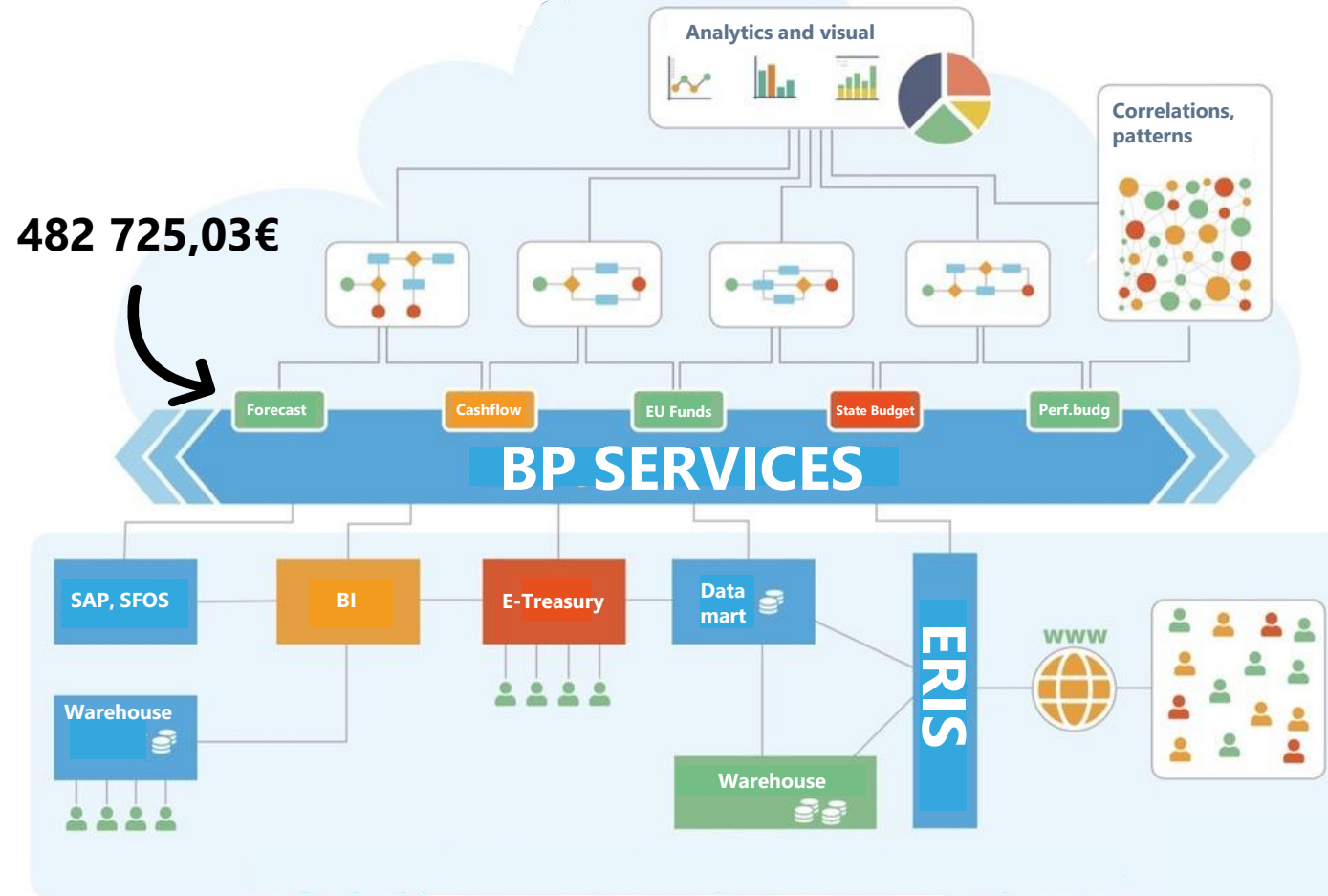
# Vision and a mission statement of Fiscal Policy Departments



We **help** to maximize **well-being** of Estonians;  
By making **smart** decisions **easy**

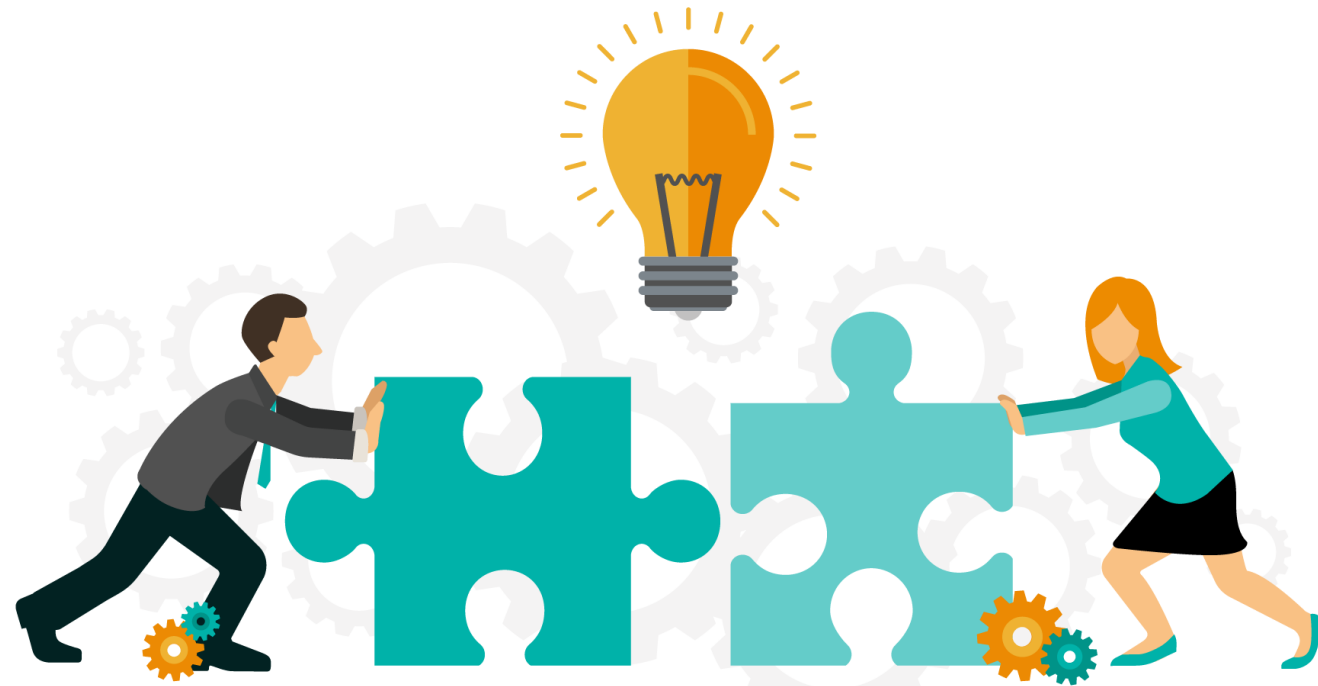


# Business and IT architecture of Budget Policy Departments (BP)





# Connecting the **silos** for AI



# „Financially Literate State“

## Antifragile

Knowing and dealing with fiscal risks

## Impactful



Activity and performance based budgeting

## Efficient



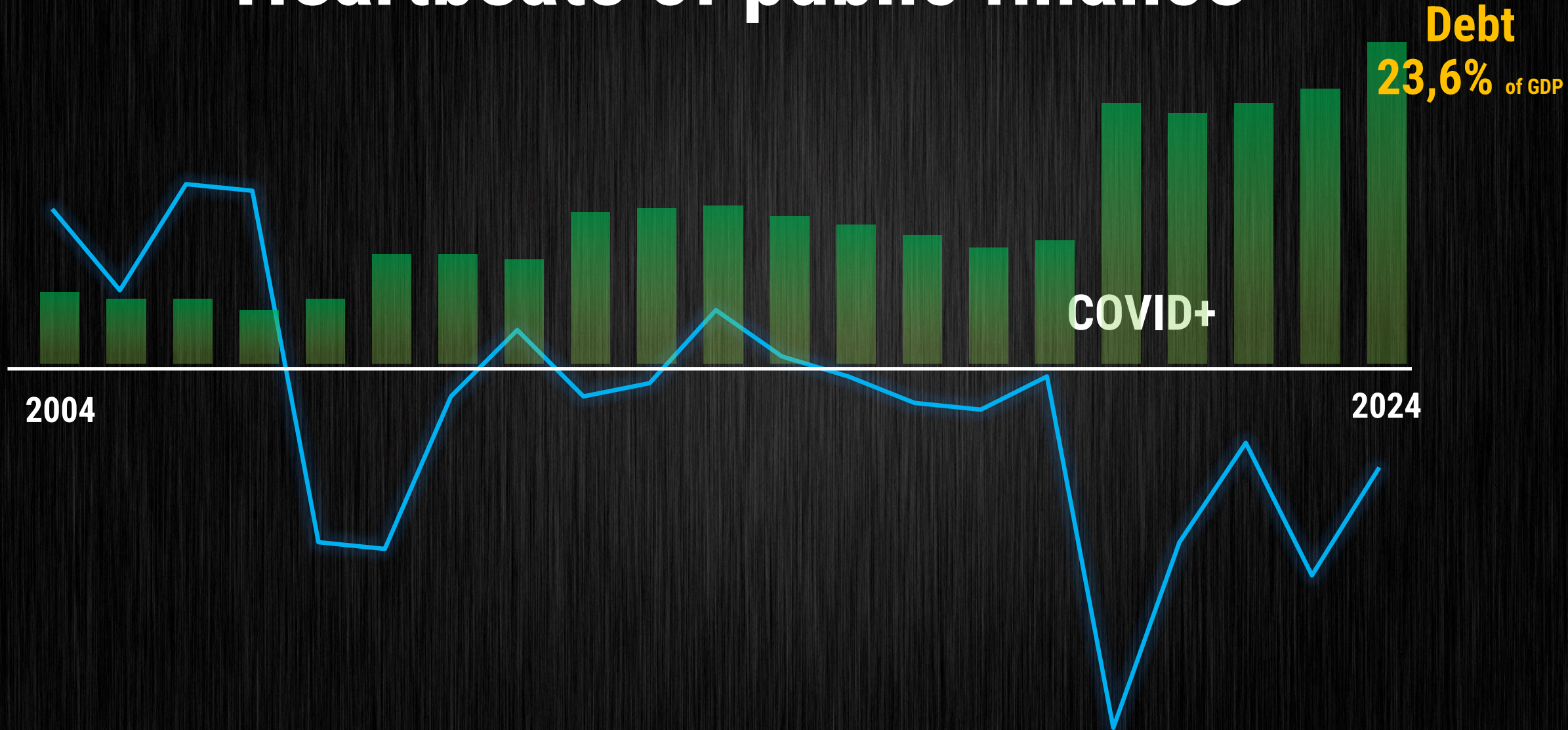
Budget revision incl. 0-based budgeting

# „Financially Literate State“

Antifragile

Knowing and dealing with **fiscal risks**

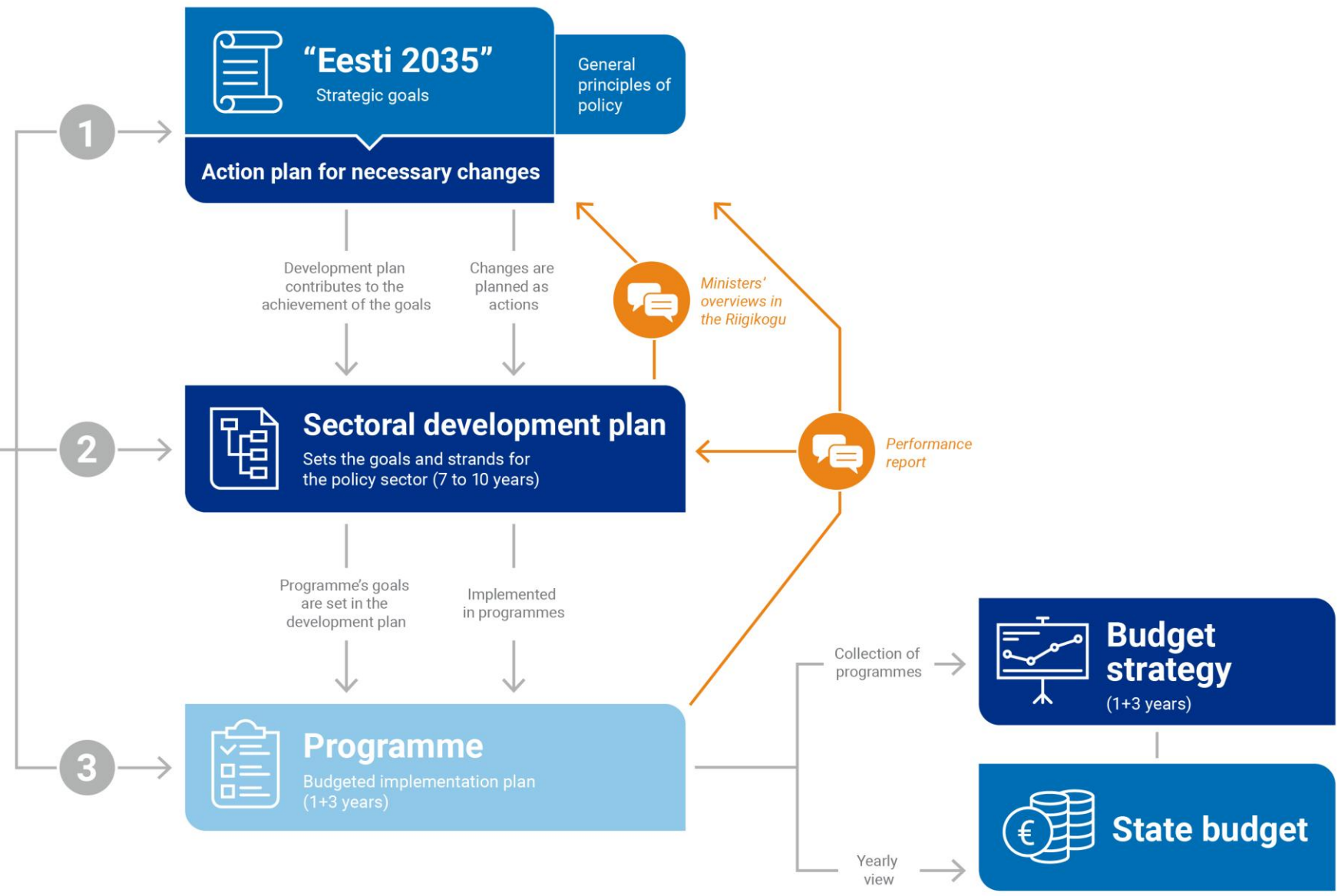
# Heartbeats of public finance



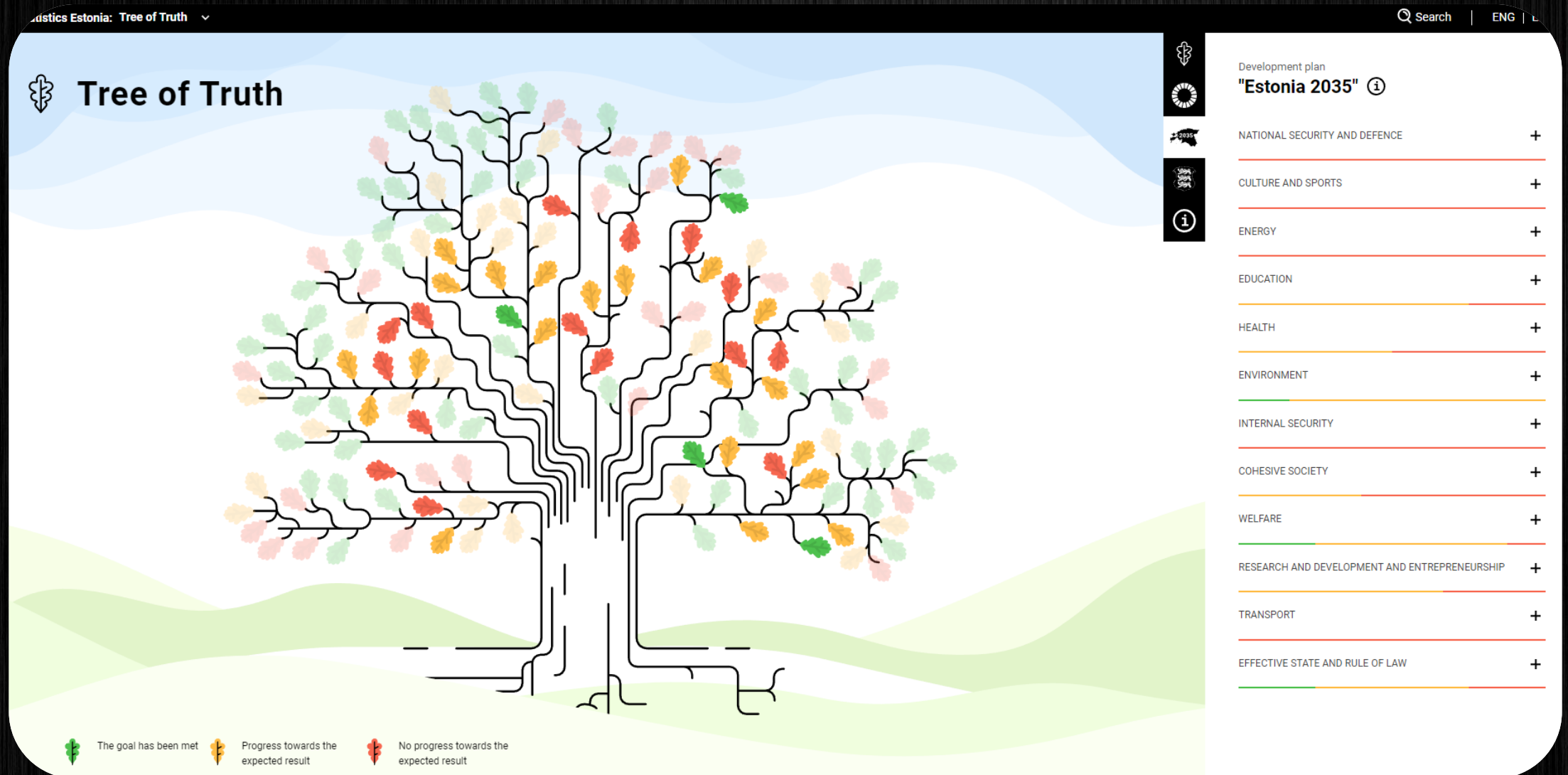
# „Financially Literate State“

Impactful

Activity and **performance based** budgeting



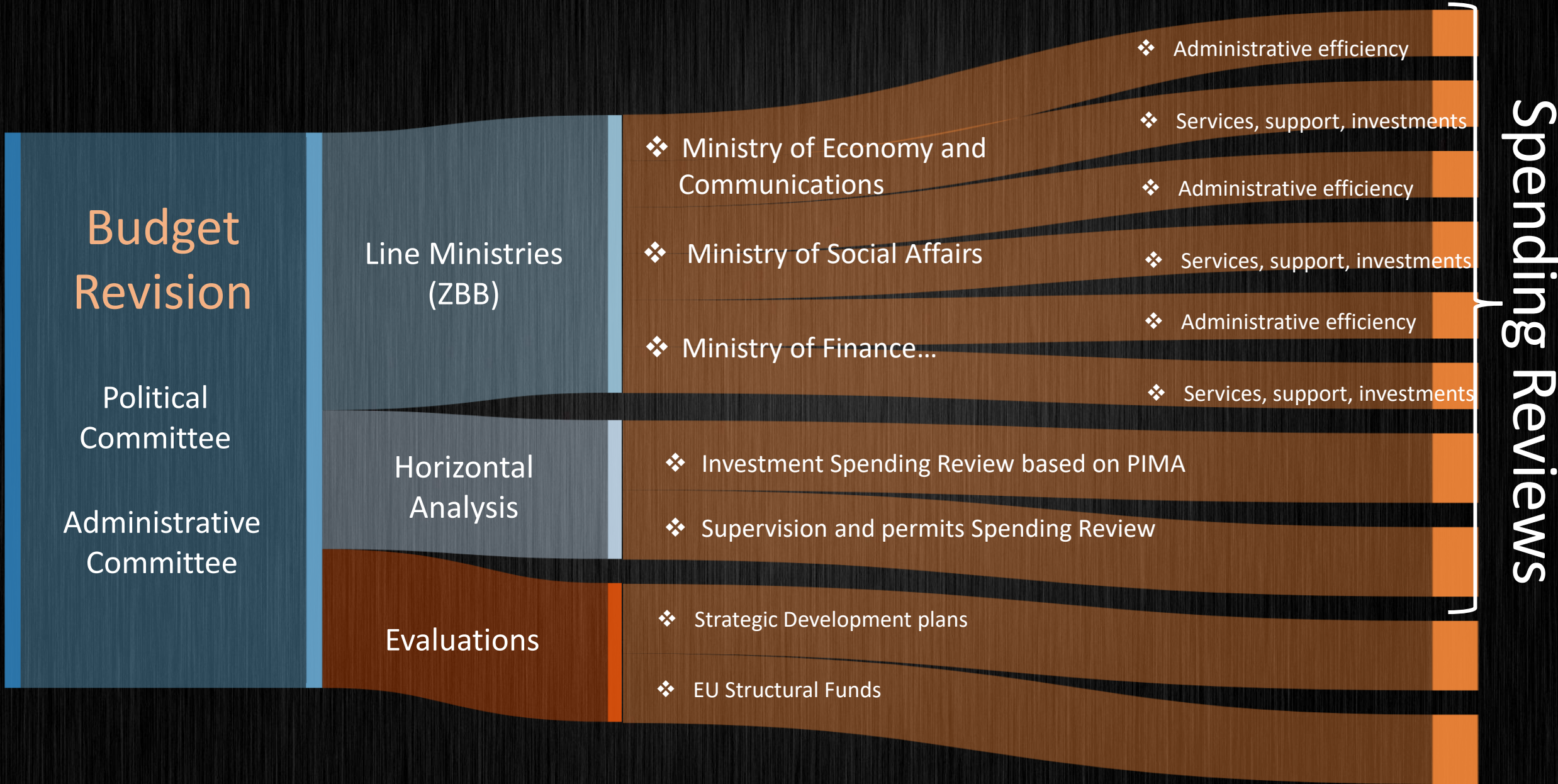
# Main strategic KPIs measured by Statistics Estonia



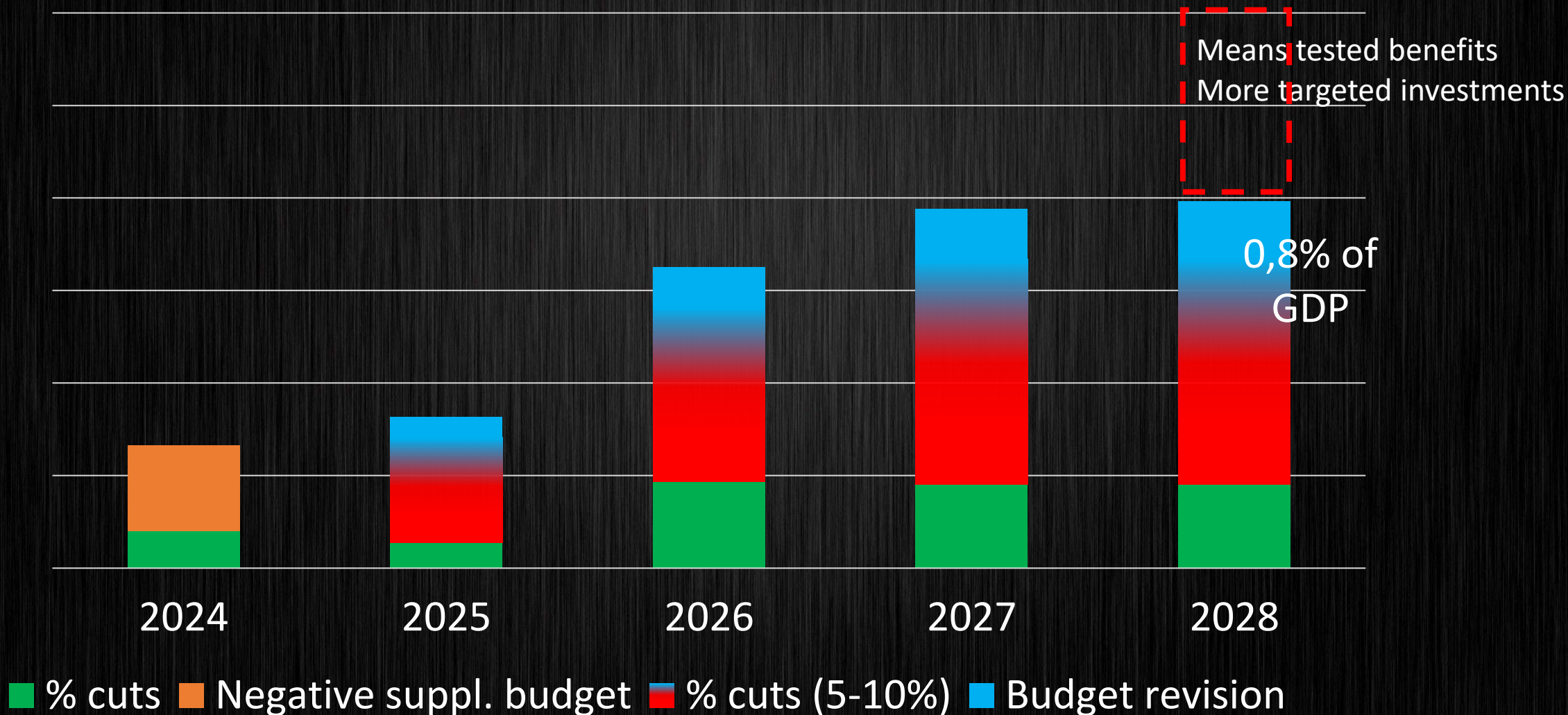
# „Financially Literate State“

Efficient

**Budget revision** incl. 0-based budgeting

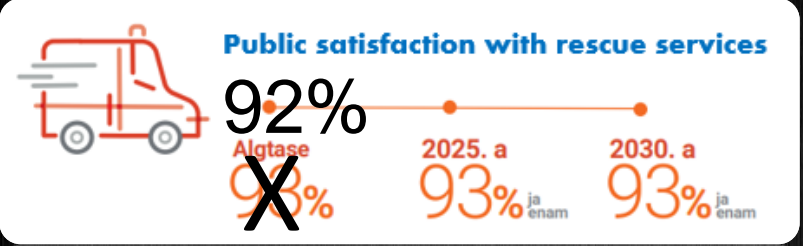


# Consolidation methods in 2023-2024





RIIGIKOGU



INTERNAL SECURITY DEVELOPMENT PLAN



INTERNAL SECURITY PROGRAM



Government



REPUBLIC OF ESTONIA  
MINISTRY OF THE INTERIOR

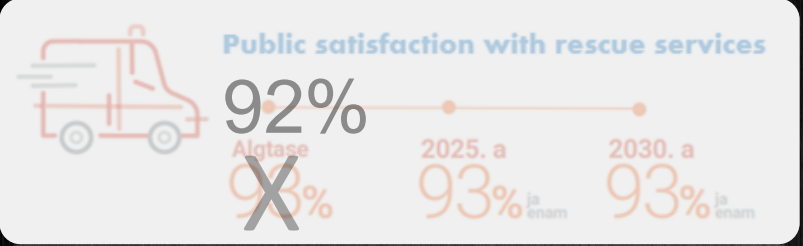
Labour cost - 71 mln €



ESTONIAN RESCUE BOARD



RIIGIKOGU



Government

INTERNAL SECURITY DEVELOPMENT PLAN



INTERNAL SECURITY PROGRAM



REPUBLIC OF ESTONIA  
MINISTRY OF THE INTERIOR



Rescue on land and inland waters  
Labour cost 58.6 mln €



Arrival time of a commando with life-saving capabilities

Below 10 min  
Now 9,4 min



Help in Estonian rescue space  
Labour cost 8.8 mln €



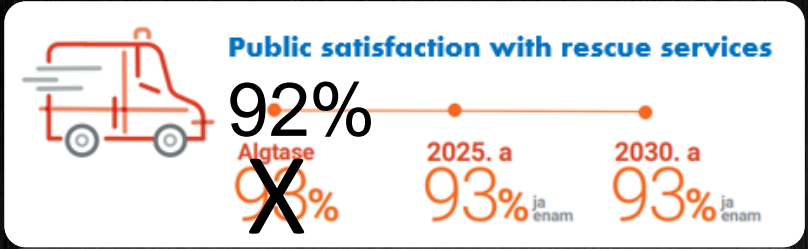
Response time by aircraft

Below 2h  
Now 1h

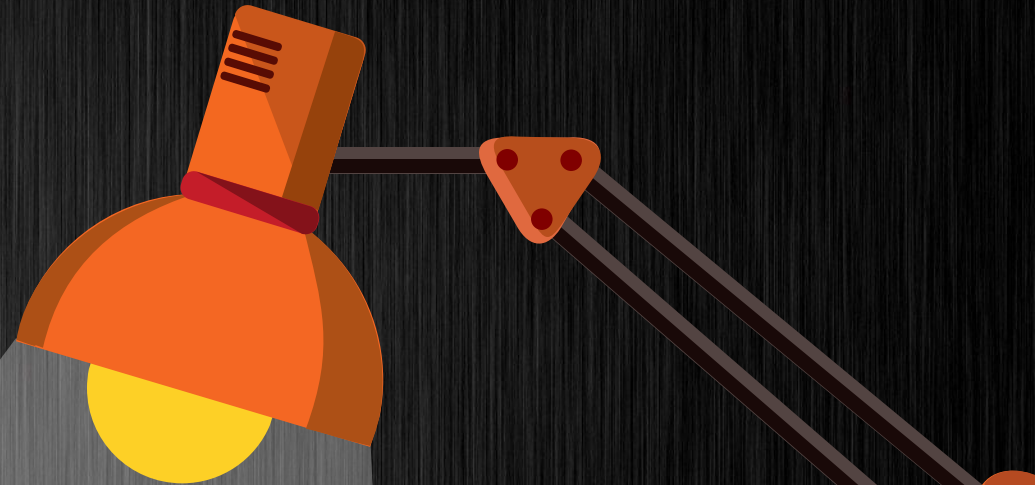
ESTONIAN RESCUE BOARD



RIIGIKOGU



Government



Marine pollution service  
 Labour cost 0.1 mln €  
 Operating cost 0.1 mln

Costal guard service  
 Labour cost 2.5 mln €  
 Operating cost 1.5 mln



ESTONIAN RESCUE BOARD



Help in Estonian rescue space

Labour cost 8.8 mln €





## 2nd National AI strategy for 2022-2023:

- public sector
- private sector
- legal system
- education+R&D
- data as an enabler

## 3rd National AI strategy 2024-2030 + additional pillars:

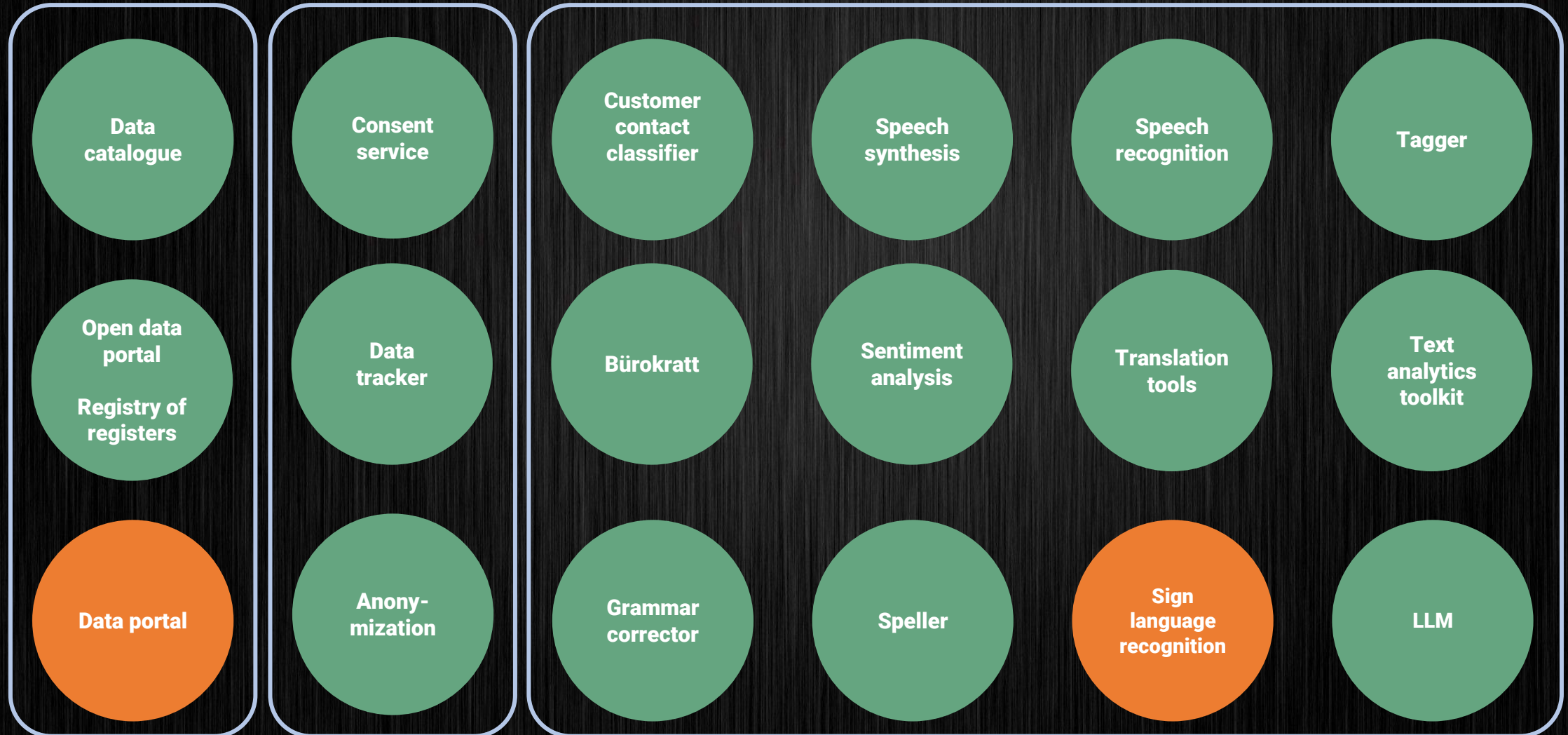
- Natural Language Technology
- Trustworthy and human-centric AI and data governance
- HPC and infrastructure
- Competences and skills
- AI leap





# 60+ reusable core components

● Developed ● In-development



# Agriculture satellite image analysis

- Detection of cutting hay
- No need for on-site inspections

The screenshot shows a satellite image analysis interface. On the left, there is a legend with the following items:

- Otsi
- Kihid
- Kaardikihid
- Haldusjaotus
- Taotletud põllud
- Niitmise tuvastamine (testimisel)
- Niitmata
- Määramata
- Hiilinenult niidetud
- Madal biomass
- Niidetud
- Abiinfo kihid

On the right, there is a data popup window titled "Info 24.10.2017 seisuga":

Taotleja nimi: OSAÜHING PAALA  
Taotletud pindala: 3.52 ha  
Taotletud Põllukultuurid  
maakasutus:  
Taotletud kultuur: liblikõieliste ja kõrreliste segu (30-80% liblikõielisi)  
Info: Niitmise tuvastamise tulemus põhineb satelliidiinfo analüüsil. Testimisel 2017.  
Niitmise staatus:  Niidetud  
Niitmise tähtaeg: 10.08.2017  
Niidetud vahemikus: 14.06.2017 - 19.06.2017  
26.07.2017 - 31.07.2017  
24.09.2017 - 29.09.2017  
Haritud vahemikus:  
Määra otsingu geometriaks

At the bottom right, there is a small map of Estonia with a red dot indicating the location. Below it, the coordinates are given: X: 6493024 Y: 586631, B: 58.5686 L: 25.4889, 500 m. At the very bottom, there is a footer: Aluskaart © Maa-amet | © PRIA | Veebikaardi abitelefoni 737 7618 | maa@pria.ee



**감사합니다**